



The citrus industry in São Paulo: an overview

August 15, 2008

Dirceu Mattos Jr.
ddm@centrodecitricultura.br



Centro de Citricultura Sylvio Moreira
Instituto Agrônomo



Citrus production: Brazil x São Paulo

(Area x thousand ha; Fruit production x million boxes 40.8 kg)

	Brazil		São Paulo (SP)		% SP/Brazil		% SP/SP	
	Area	Production	Area	Production	Area	Production	Area	Production
Oranges	806.3	437.6	673.1	352.1	83	80	92	92
Tangerines	61.3	30.2	23.1	13.4	38	44	3	3
Limes/lemons	50.8	25.3	34.8	20.3	69	80	5	5
Total	918.4	493.1	731.0	385.8	80	78	100	100

¹
Source: IBGE (2005)





Orange production destiny 2002/03-2003/04 seasons

FCOJ: 80.0 %

Fresh fruit - Brazil: 19.5 %

Fresh fruit - Export: 0.5 %

Total: 100.0 %

Source: Pensa (2007)





Variety distribution

million trees

%

Oranges

90.2

Pêra

92.7

37.8

Natal

23.9

23.9

Valencia

21.2

21.2

Hamlin

15.8

6.4

Tangerines

3.8

Ponkan

5.7

2.3

Murcott

3.3

1.4

Limes/Lemons

4.0

Tahiti

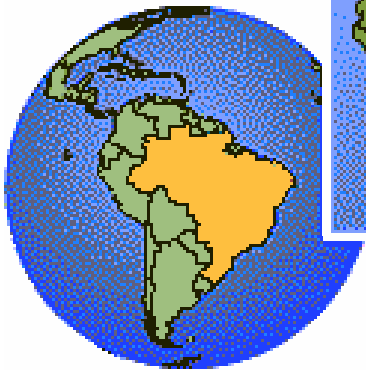
8.2

3.3

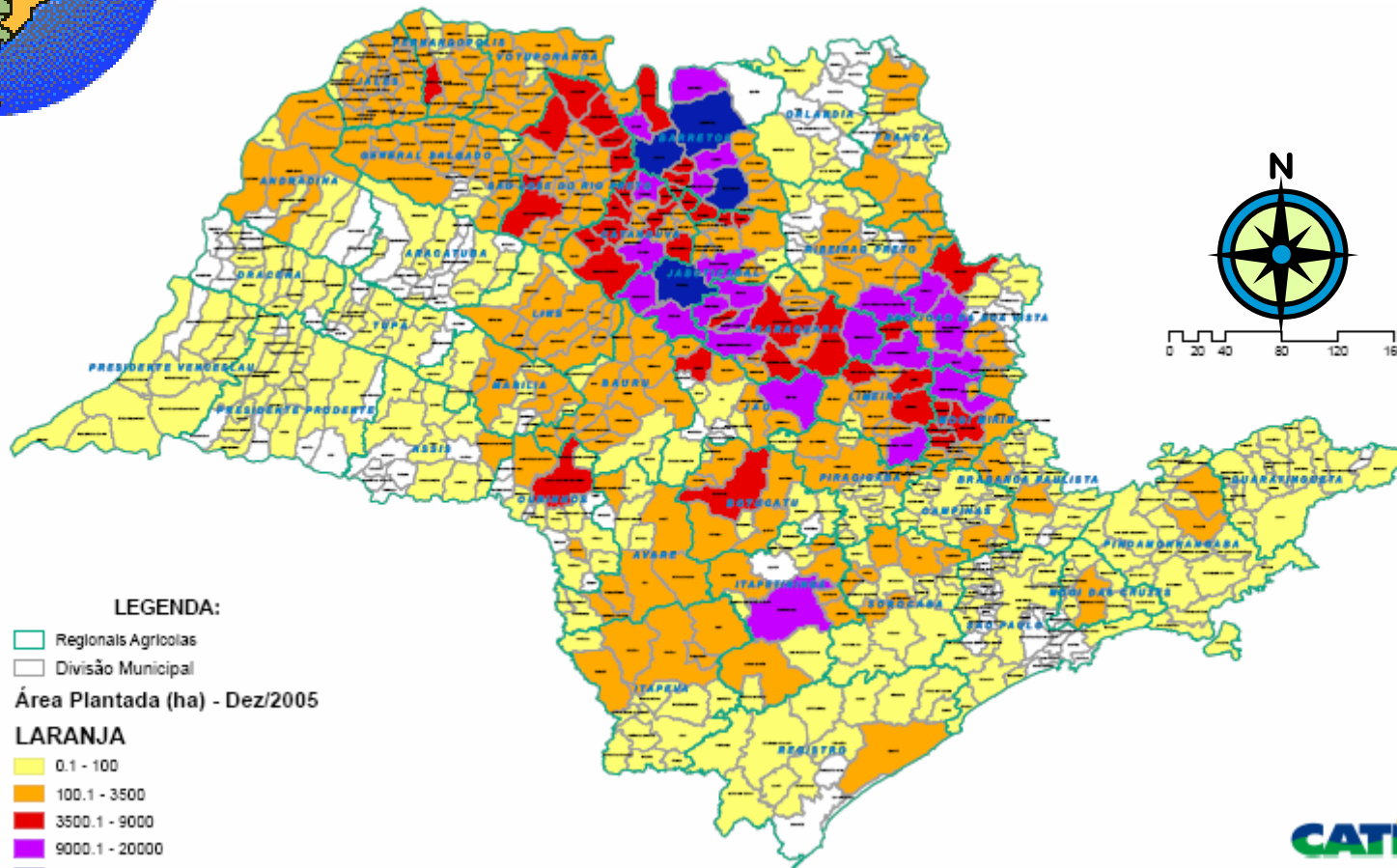
Sicilian

1.0

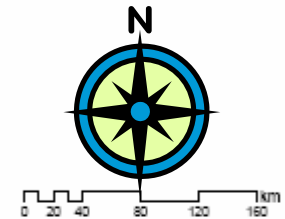
0.3



Orange trees distribution



- LEGENDA:**
- Regionais Agrícolas
 - Divisão Municipal
- Área Plantada (ha) - Dez/2005**
- LARANJA**
- 0.1 - 100
 - 100.1 - 3500
 - 3500.1 - 9000
 - 9000.1 - 20000
 - 20000.1 - 40000



590 km

900 km

Citrus production in São Paulo

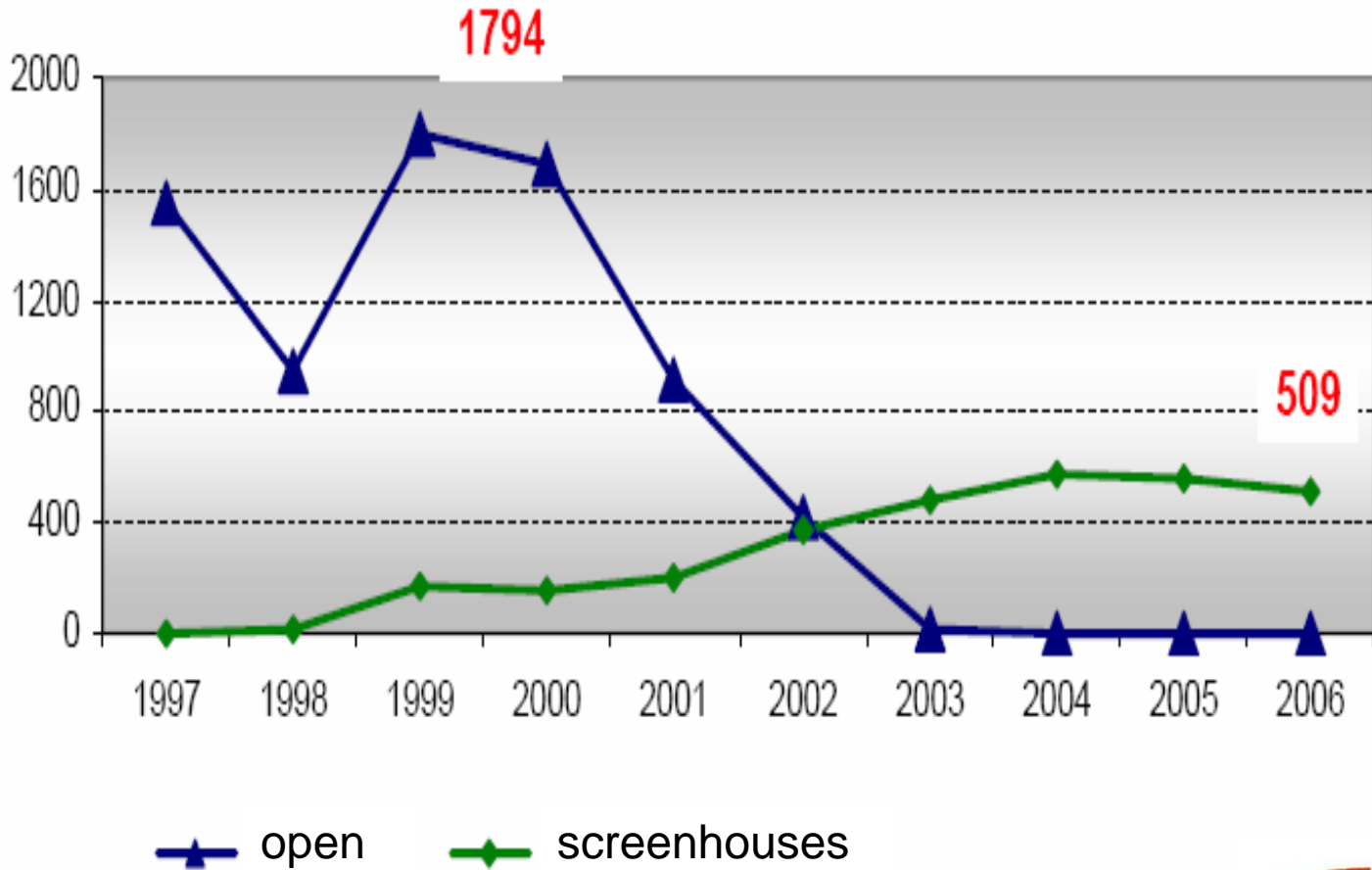
Year	Trees			Prodction (box 40.8 kg)	Fruit yield (box 40.8 kg)		Tree density (tree/ha)*	Area (ha)		
	Non-bearing (<3-yr-old)	Bearing (> 3-yr-old)	Total		/tree	/ha		Nonbearing tress	Bearing trees	Total
2001	20.865.545	184.945.518	205.811.063	328.205.050	1,77	568	320	65.205	577.955	643.160
2002	23.825.494	187.806.098	211.631.592	361.777.839	1,93	616	320	74.455	586.894	661.349
2003	25.042.048	187.517.986	212.560.034	327.134.568	1,74	558	320	78.256	585.994	664.250
2004	27.207.427	188.167.228	215.374.655	360.772.032	1,92	614	320	85.023	588.023	672.950
2005	31.148.670	183.881.781	215.030.451	352.186.566	1,92	613	320	97.340	574.631	671.850
2006	32.072.781	179.012.057	211.084.838	348.399.593	1,95	623	320	100.227	559.413	659.640
2007	34.795.460	182.022.785	216.818.245	358.593.572	1,97	630	320	108.736	568.821	677.557

* Average for all ages.

Source: Instituto de Economia Agrícola (IEA)



Citrus nurseries in São Paulo



Source: Fundecitrus/Vivecitrus



Tree distribution by growers in São Paulo, 2006

# Tree	% Growers	% Trees
> 200.000	0.9	31.5
30,000 to 199,000	7.6	34.8
< 29,000	91.5	33.7
Total	100.0	100.0

Source: Pensa (2007)

¹ Statistics does not include groves from industries (18-22%).



Thanks for your visit!

