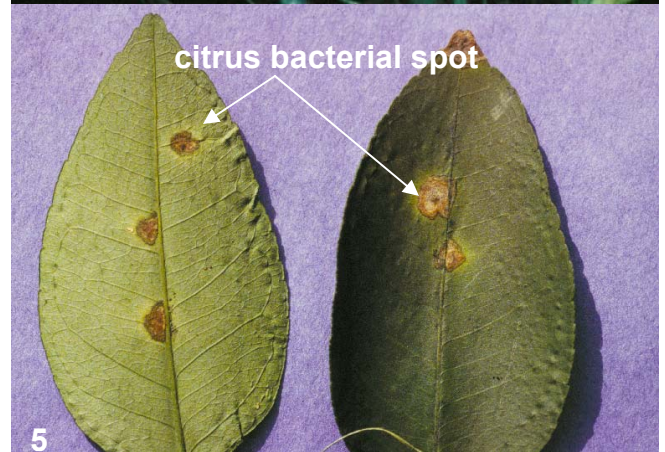
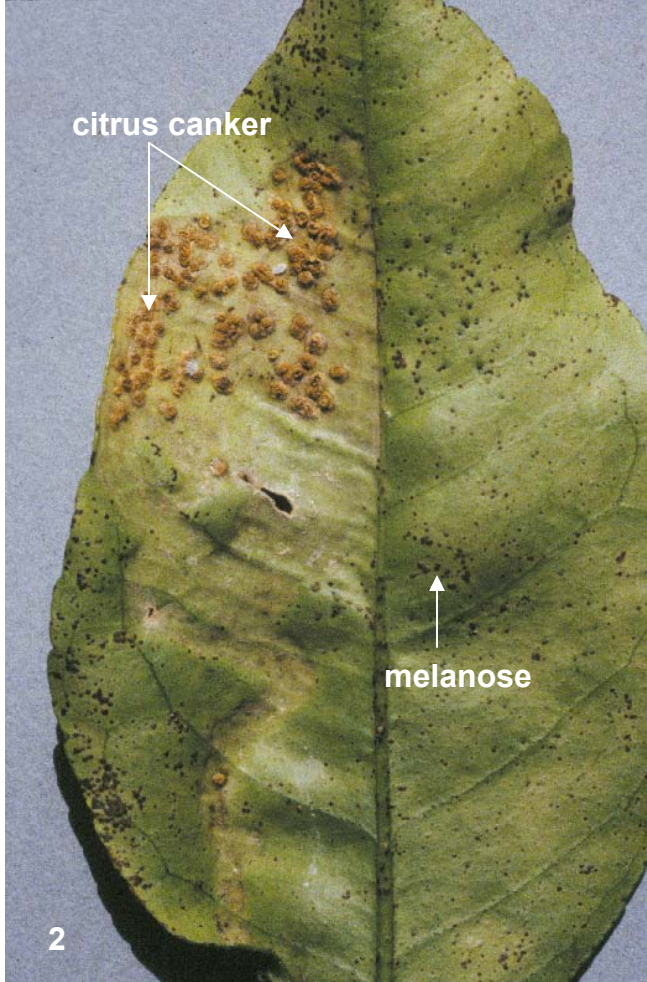


## Citrus Canker Symptoms

1. (A) Leaf lesions-back and (B) front of leaf
2. Older leaf lesions
3. (A & B) Fruit lesions
4. Stem lesions
5. Leaf lesions in leaf miner wounds

If you suspect citrus canker, contact your local CCEP office or call **1-800-282-5153**.



## Similar Diseases to Citrus Canker

1. Citrus canker front and back on left, greasy spot front and back on right
2. Citrus canker in leaf miner wounds in upper left, small dark lesions caused by melanose
3. Scab, upper surface, and lower surface, scab in leaf miner wounds
4. Alternaria
5. Citrus bacterial spot